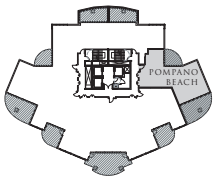
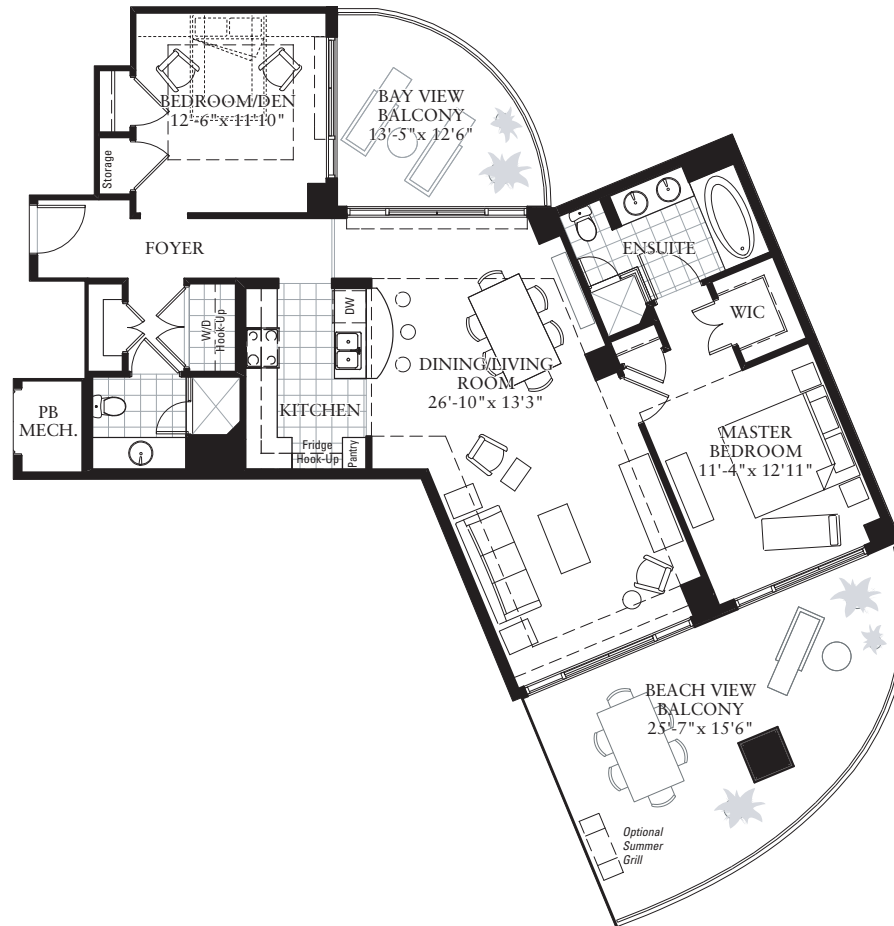




**PALISADE PALMS**  
GALVESTON BEACHFRONT LIVING



**POMPANO BEACH (East)**  
2 Bedroom, 2 Bathroom, 2 Balcony

1,296 sq.ft. AC  
460 sq.ft. Balcony

Figures reflecting size, square footage and other dimensions are estimates. After completion of construction, actual dimensions and areas may vary from original estimates. Plans, prices, descriptions and amenities are subject to change without notice. Please refer to the Property Report and Condominium Information Statement for complete information and disclosures regarding the project and units. E. & O. E. Obtain the Property Report required by Federal law and read it before signing anything. No Federal agency has judged the merits or value, if any, of this property.